



OLMET

**CONCRETE EQUIPMENT
TO BUILD THE FUTURE**





PRODUCT RANGE

TILTING AND FIXED TABLES	P. 10-13
VERTICAL BATTERY FORMWORKS	P. 14-15
CAROUSEL PLANTS	P. 16-19
FORMWORKS FOR COLUMNS	P. 20-21
FORMWORKS FOR MAIN BEAMS	P. 22-23
FORMWORKS FOR ROOFING BEAMS	P. 24-25
FORMWORKS FOR BRIDGE BEAMS	P. 26-27
FORMWORKS FOR STAIRCASES	P. 28-29
FORMWORKS FOR 3D ELEMENTS	P. 30-31
OMS - OLMET MAGNETIC BOX	P. 32-33



OLMET ITALY DESIGNS AND MANUFACTURES MACHINERY AND PLANTS FOR PRE-CASTING CONCRETE ELEMENTS

Since 1961 the company has been committed to ensure continuity of vision and values between the past, present and future and to maintain the most suitable organization to follow the markets evolution.

Olmet offers its customers advanced technological solutions - entirely automatic - for small, medium and large-size industrial productions.



EXPERTISE, KNOW-HOW, COMPETENCE, PASSION, EFFICIENCY, DYNAMISM

Olmet solutions are highly customized, versatile and flexible to grant the best in terms of efficiency, saving and usability.

Olmet is a partner for the pre-casting industries to reach the highest quality standards, thus ensuring quality and safety in the construction process: the company is in total synergy with the customer to accept ever-changing challenges, in order to promote innovation in this sector.

Starting from conventional building projects by customers, Olmet provides also the designing of concrete precast elements of any type for the civil, industrial and infrastructure construction industry in connection with renowned Italian architecture and engineering firms.

The headquarter is located next to Venice in Italy. Over the years the company has developed an international sales network with a worldwide presence in more than 70 different countries with over 1200 installations.

The manufacturing workshop, with 43.000 sq.mt of outdoor area and 10.000 sq.mt of manufacturing area, can carry out any type of material processing by means of highly automated pre-processing plants for steel plates, including:

- CNC laser-cutting;
- CNC boring on flat bars and other profiles, up to a maximum size of 5.000 mm;
- special machining of large size steelwork elements;
- press-bending up to 14.000 mm. length;
- milling and lathing by CNC machinery;
- we manufacture design-made sheared, press-bended, milled and welded elements of large dimensions having a maximum weight of 20 tons.

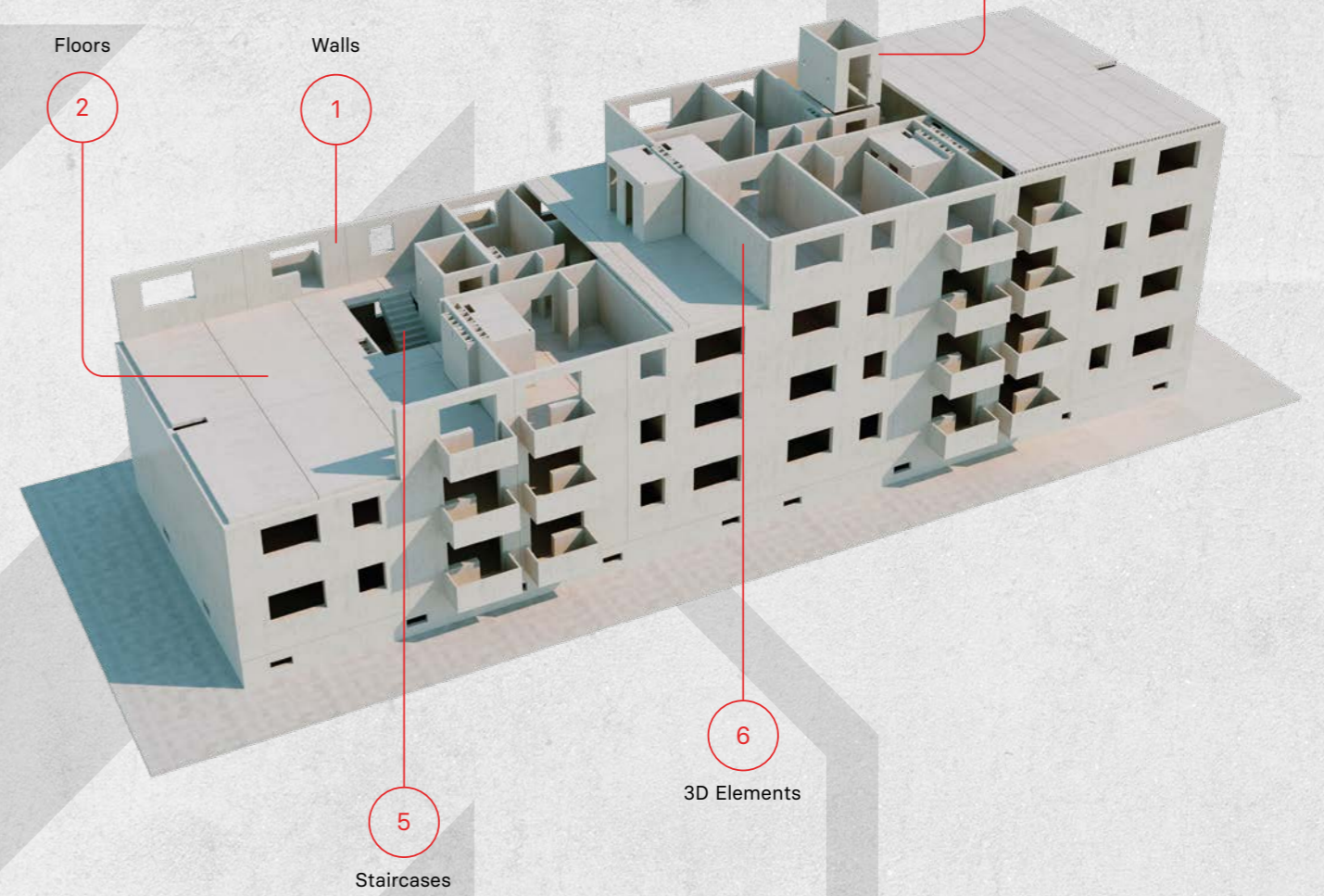
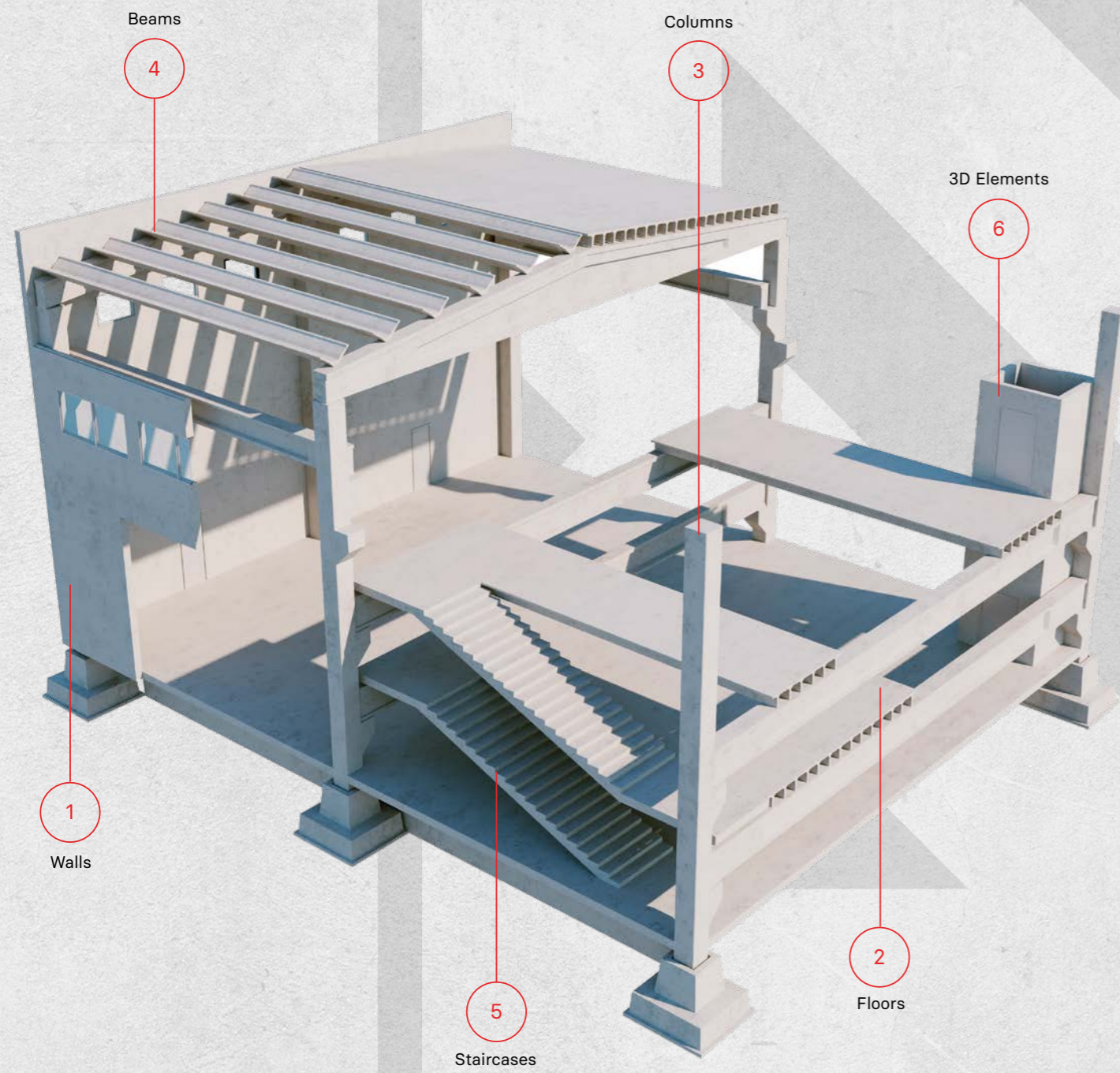
The reliability of the company over the years has grown giving to customers a fully flagged support not only during assembling works but also during scheduled periodic technical assistance.



"The experience gained allows us to offer the most appropriate technologies to produce prefabricated concrete elements. Our mission is to contribute to the development of the construction sector by offering cutting-edge technologies that help our customers improve productivity, reduce costs, and maintain high standards of quality and safety on every project"

Alberto Tedesco
President
Olmet Italy

INDUSTRIAL CONSTRUCTION



RESIDENTIAL CONSTRUCTION

Products range

TILTING AND FIXED TABLES

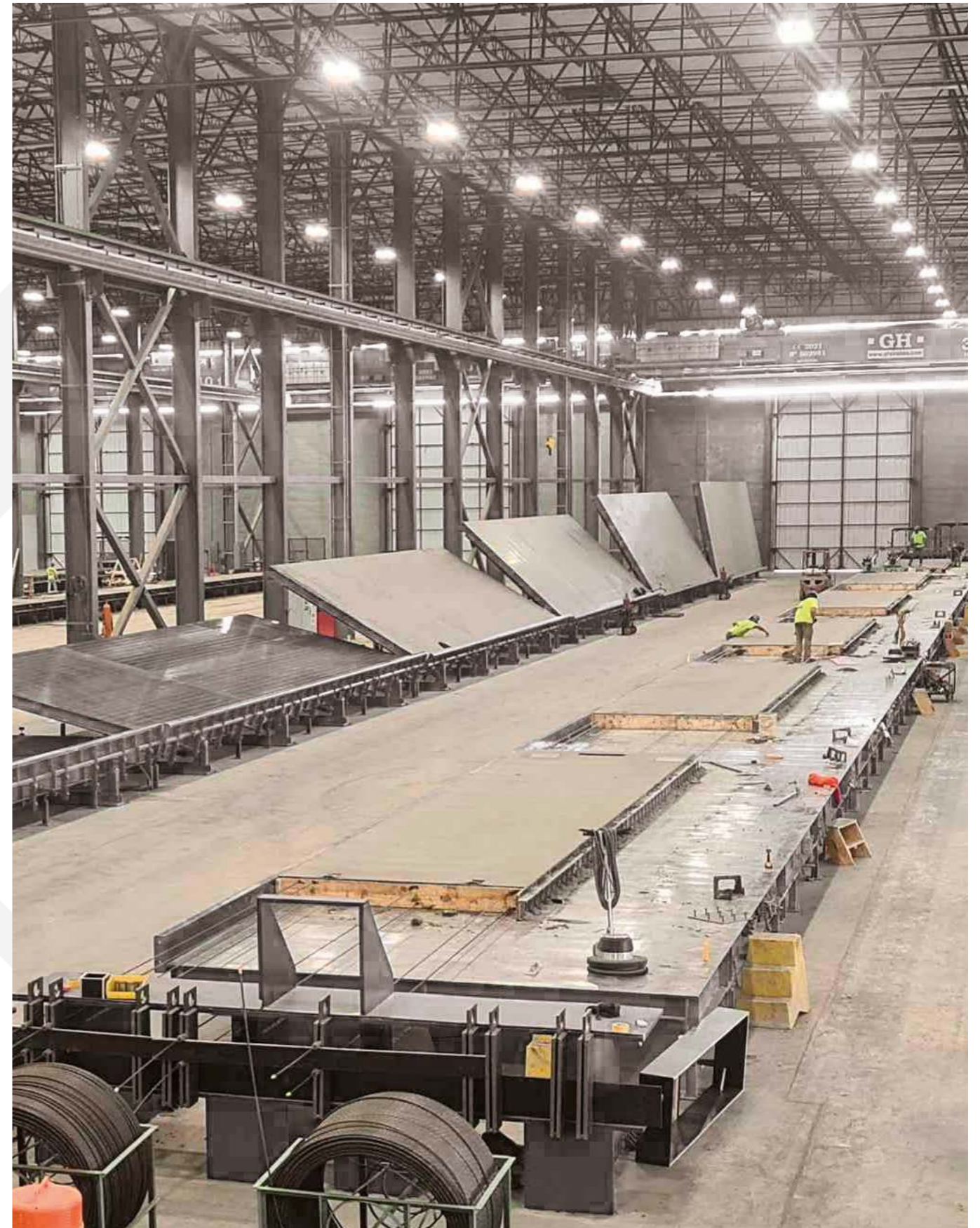
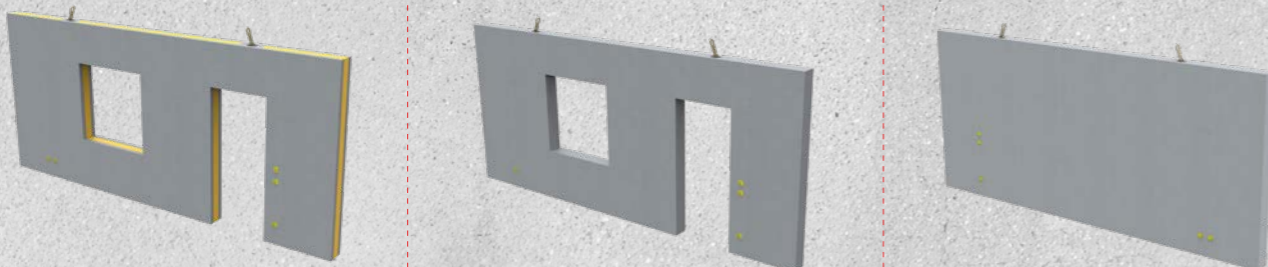


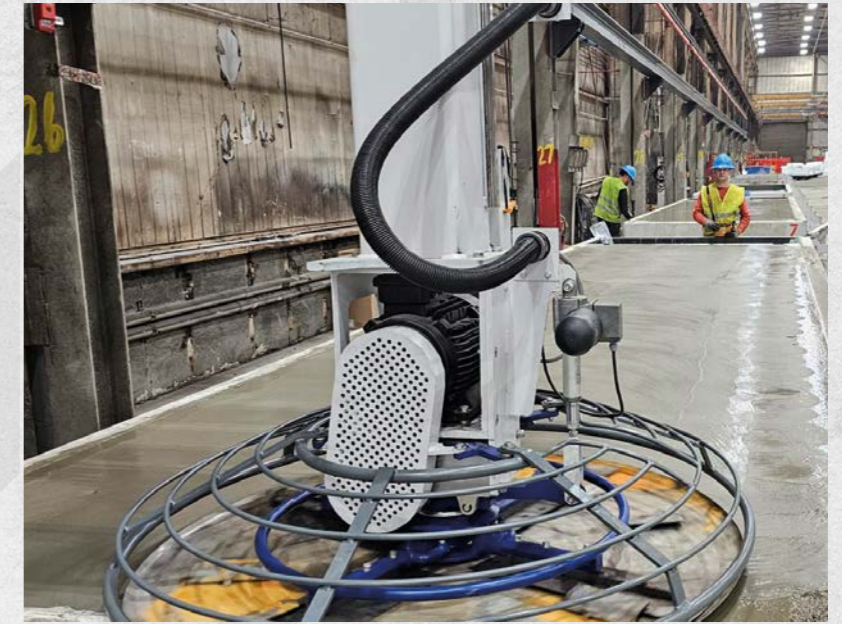
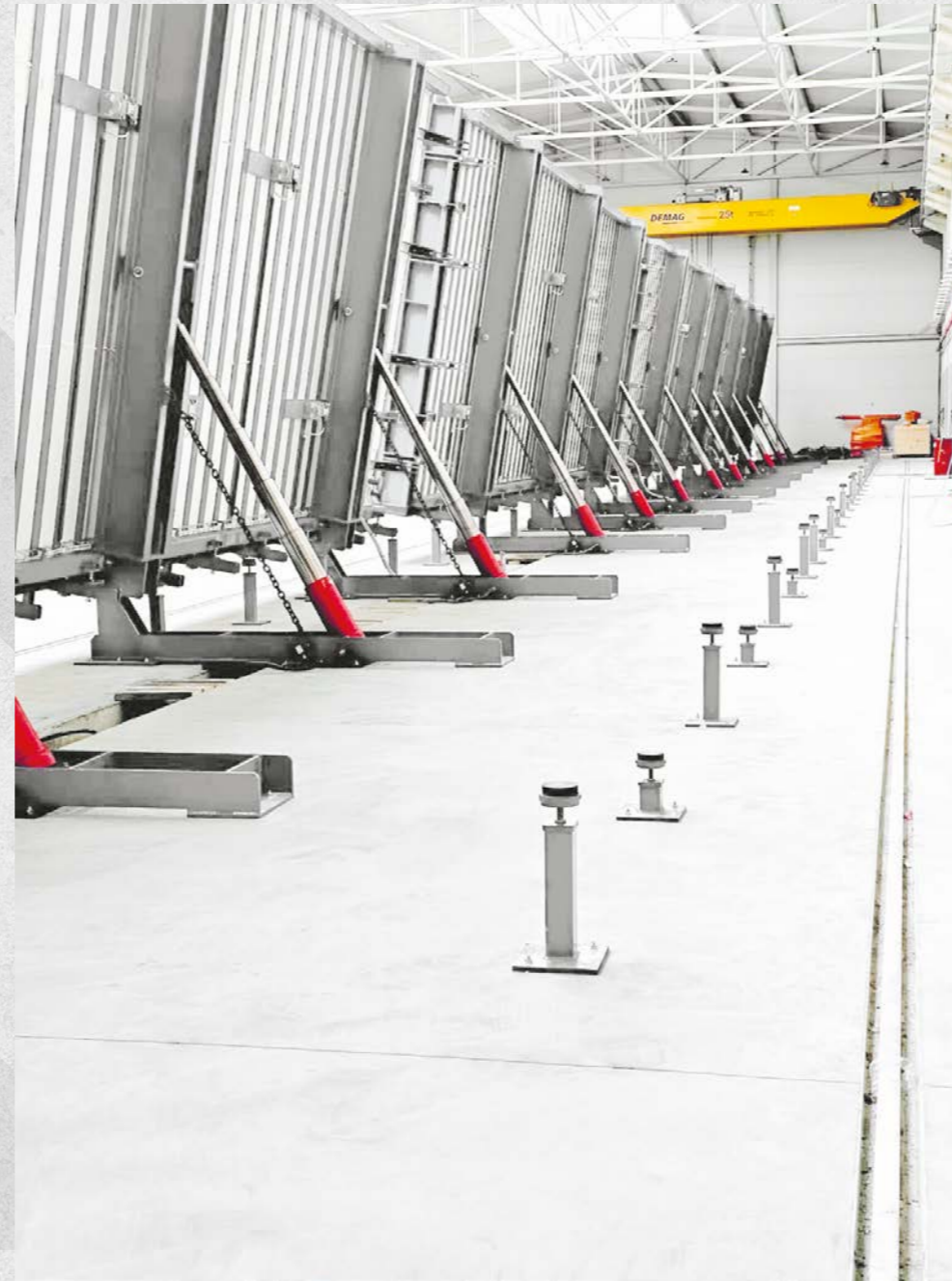
Tilting tables are the ideal solution for manufacturing flat elements as slabs, solid walls and multi-layer panels with passive reinforcement and limited thickness.

It is possible to link more tables using a "joining piece", thus creating a continuous casting surface up to a maximum length of 100 mt.

The system is very flexible, allowing to manufacture elements of various thicknesses, widths and lengths. The tables are tilted by max. 80° in order to ease demoulding of the elements, by means of a hydraulic system with synchronized telescopic cylinders.

Precast elements





- Advantages
- ▶ INCREASED PRODUCTIVITY
 - ▶ ENHANCED PRECISION
 - ▶ TIME SAVING
 - ▶ FLEXIBILITY

VERTICAL BATTERY FORMWORKS

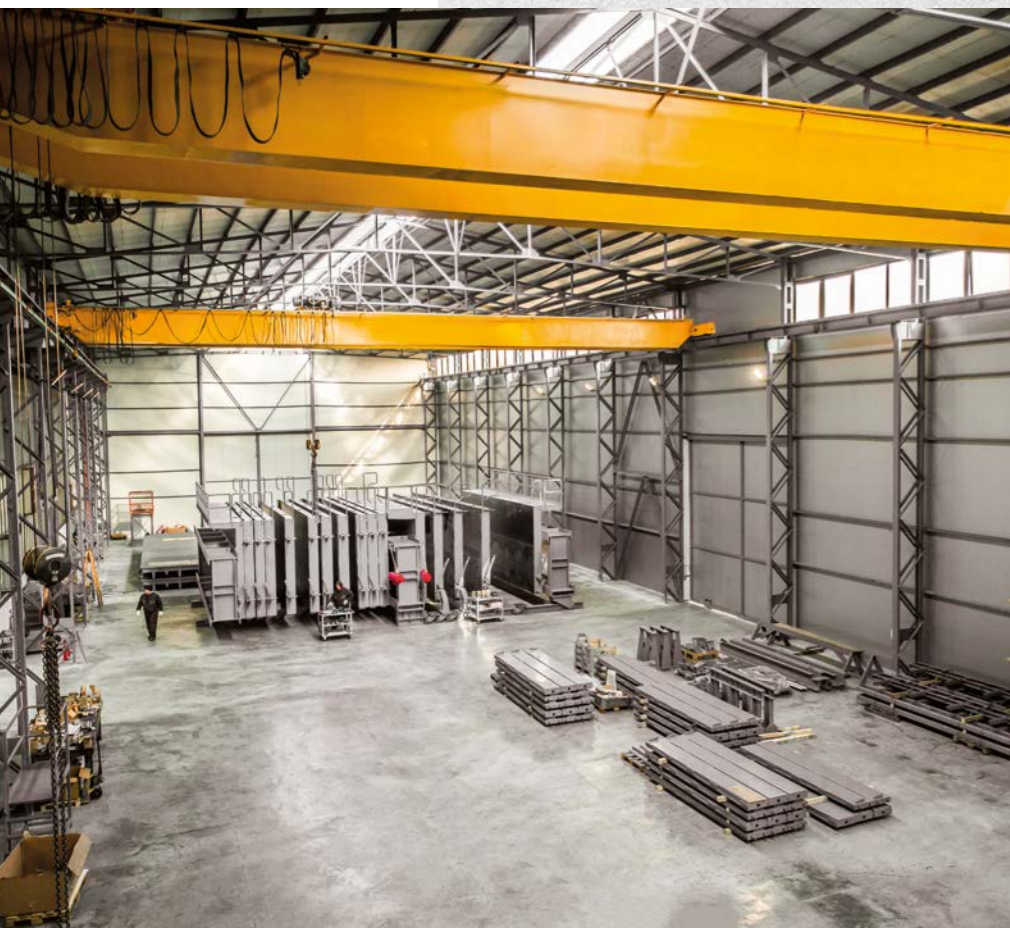
The vertical battery formworks are designed for the production of big flat elements as solid walls of variable thickness (from 80 mm. to 300 mm.) with passive reinforcement.

The battery consists of various moving casting sections, parallel to each other. The smooth finishing of both sides of the wall is of high quality.

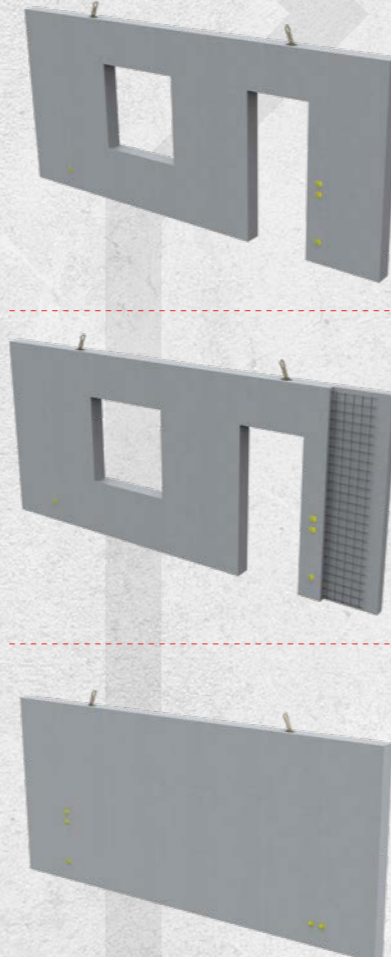
The thickness of the wall to be manufactured is defined by the formwork profiles placed at the base and along the sides, in-between two shutters.

Advantages

- ▶ SPACE EFFICIENCY
- ▶ INCREASED SPEED OF CONSTRUCTION
- ▶ BETTER QUALITY CONTROL
- ▶ FLEXIBILITY



Precast elements



Products range

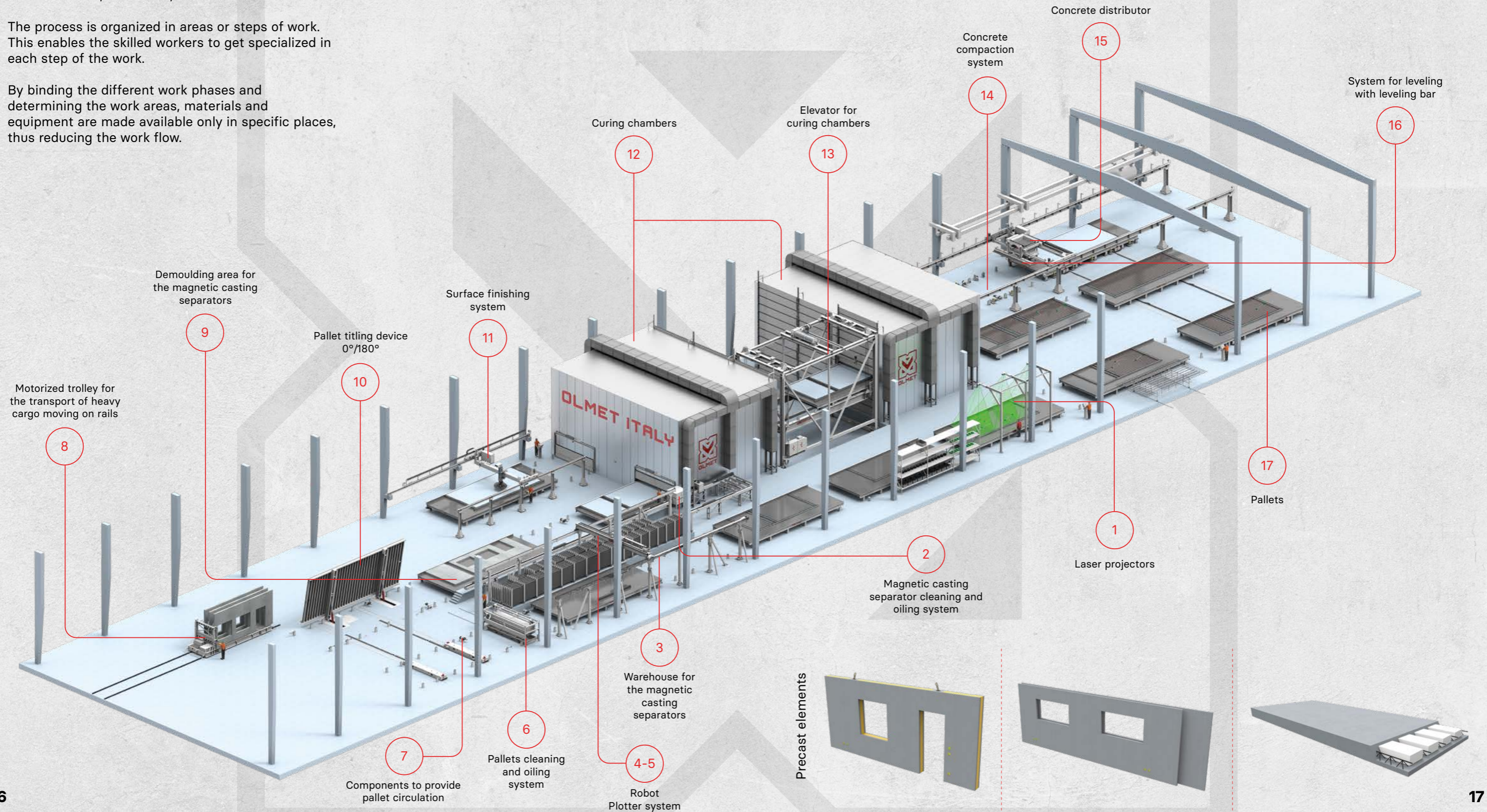
CAROUSEL PLANTS

Carousel plant or Pallet circulation system is a highly automated system allowing for the mass production of reinforced concrete precast elements having a straight surface and a high level finishing, as sandwich walls, solid walls, double-walls and slabs.

The process is organized in areas or steps of work. This enables the skilled workers to get specialized in each step of the work.

By binding the different work phases and determining the work areas, materials and equipment are made available only in specific places, thus reducing the work flow.

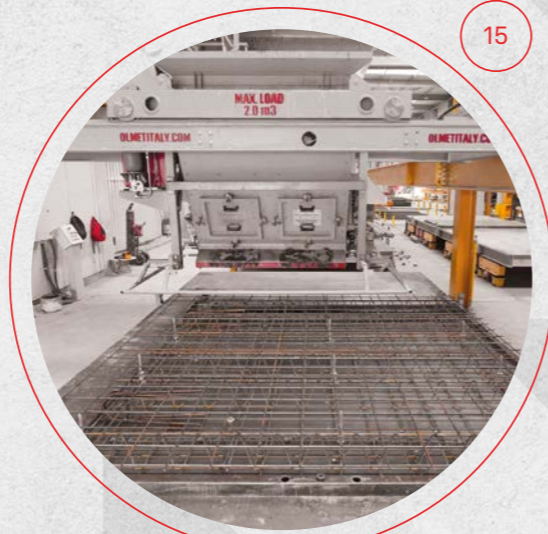
- Advantages
- ▶ OPTIMIZATION OF MATERIAL FLOW
 - ▶ MECHANIZATION AND AUTOMATION OF THE DIFFERENT WORK PROCESSES
 - ▶ PLANNING AND CONTROLLING PRODUCTION
 - ▶ MAXIMIZATION OF THE PRODUCT QUALITY



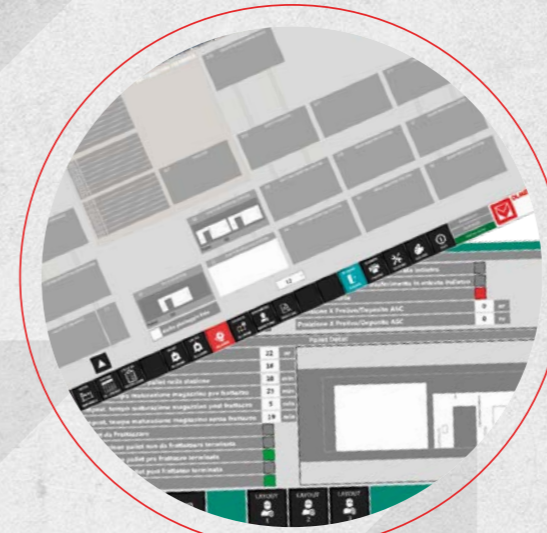
CAROUSEL PLANTS



Pallets



Concrete distributor



Supervision software



Surface finishing system



Demoulding area for the magnetic casting separators



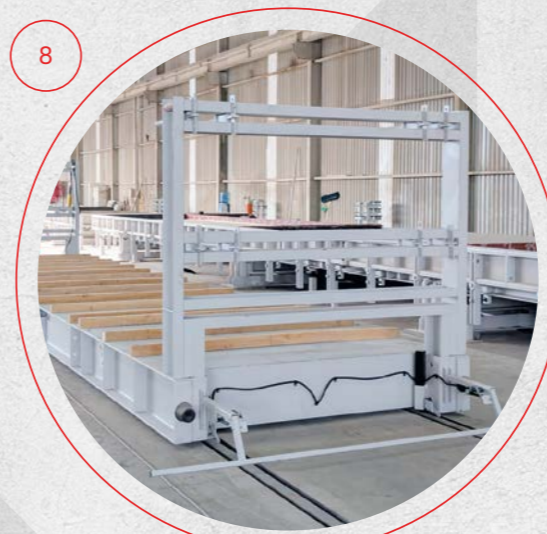
Components to provide pallet circulation



Curing chambers



Pallet tilting device 0°/180°



Motorized trolley for the transport of heavy cargo moving on rails



Plotter system

Products range

FORMWORKS FOR COLUMNS

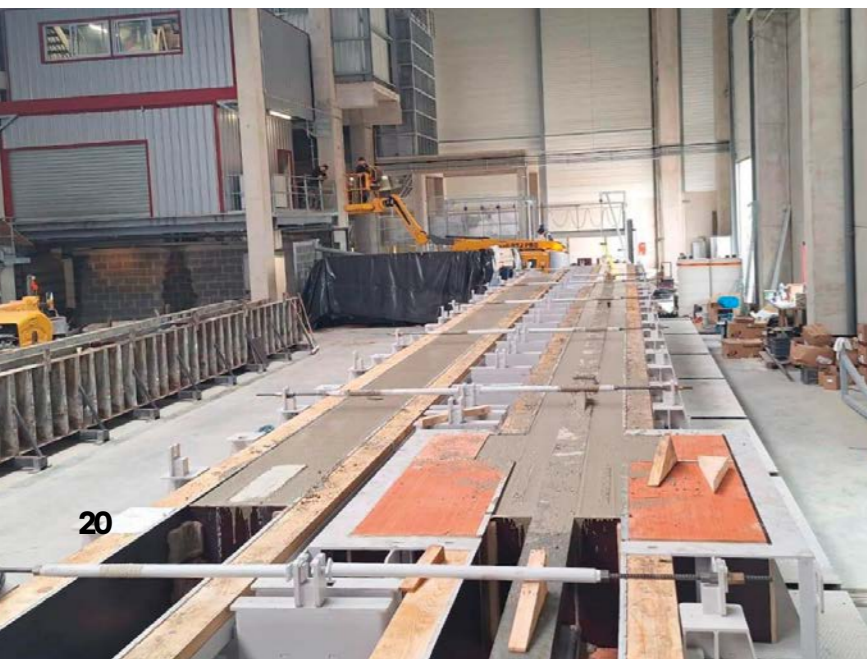
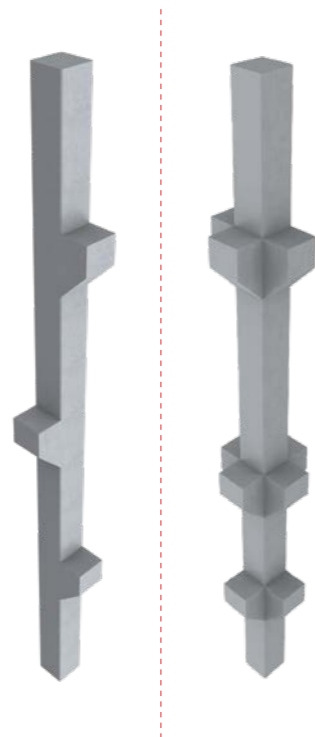
The formworks for columns are extremely versatile and easy-to-use machines. The fast assembling system for formwork components to manufacture the console or to change the pre-cast element section allows to change even every day the type of element to be manufactured.

The unlocking/locking movements of the side elements or shutters and the bottom plate lifting to change the section are operated by means of advanced handling systems.

Advantages

- ▶ EASY TO USE MACHINES IMPROVING WORKER PRODUCTIVITY
- ▶ HIGH PRECISION IN THE SHAPE AND DIMENSIONS OF THE COLUMNS
- ▶ CUSTOMIZATION AND VERSATILITY FOR DIFFERENT ARCHITECTURAL DESIGNS

Precast elements



Products range

FORMWORKS FOR PRESTRESSED BEAMS FORMWORKS FOR MAIN BEAMS

Main beams are quite often pre-stressed. So, the scope of supply of formworks for main beams includes anchoring heads (stressing heads or abutments) for the pre-stressing strands.

The same are complete with double-acting or single-acting cylinders for pre-stressing operations before casting and for slackening operations after the curing phase is over.

Advantages

- ▶ T, I, L ELEMENTS
- ▶ SELF-STRESSING MOULDS OR FOUNDATION ANCHORAGE
- ▶ POSSIBILITY OF ASSEMBLING THE EQUIPMENT ON SITE - TRANSPORTABLE FORMWORKS

Precast elements

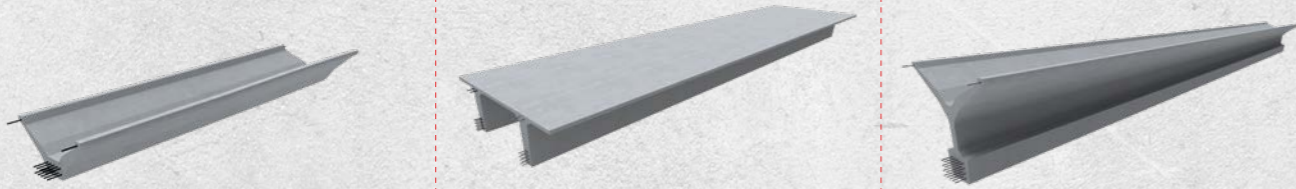


Products range

FORMWORKS FOR PRESTRESSED BEAMS FORMWORKS FOR ROOFING BEAMS

The formworks to manufacture roofing beams are usually self-reacting and resisting up to 700 ton pre-stressing force.

The accurate sizing of the structures and the high quality of the machinery enable the customer to manufacture concrete elements cast with a max 2 mm. tolerance to the design dimensions.



Precast elements

- Advantages
- ▶ TT, Y, V ELEMENTS
 - ▶ PRECISION AND ACCURACY TO ENSURE THE OVERALL STABILITY AND SAFETY
 - ▶ ADAPTABLE TO FIT VARIOUS ROOFING BEAM DESIGNS AND SIZES
 - ▶ SELF REACTING FORMWORKS
 - ▶ AUTOMATED HANDLING SYSTEMS TO SPEED UP PRODUCTION PROCESSES



Products range

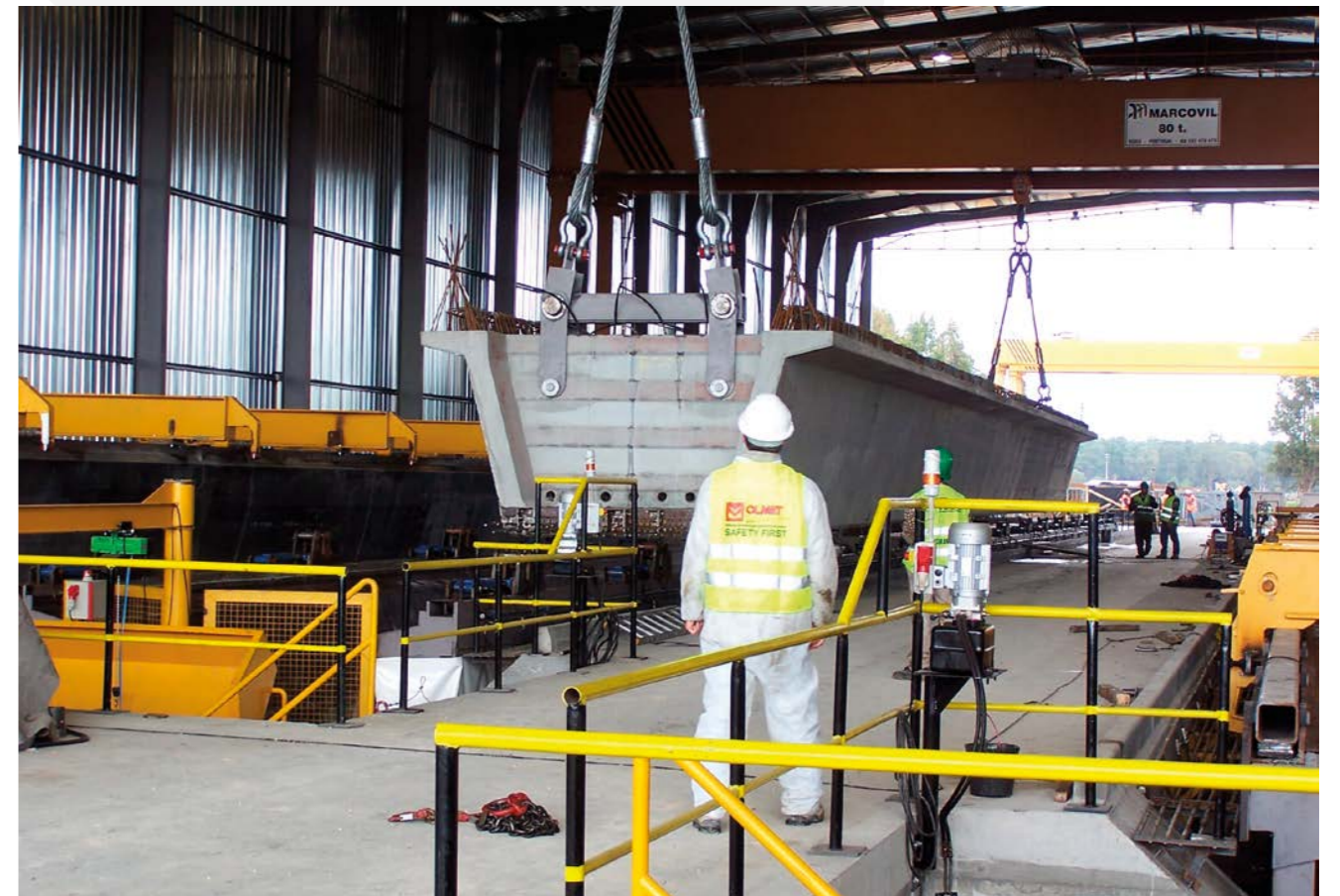
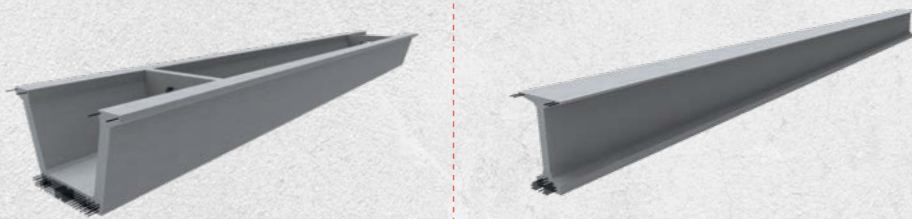
FORMWORKS FOR PRESTRESSED BEAMS FORMWORKS FOR BRIDGE BEAMS

The precasting lines for bridge beams are huge plants which are built using steel profiles of increased section. Formworks are designed to manufacture different concrete product cross-sections, by modifying the formwork shape itself.

All the opening/closing movements of side elements and the pre-lifting and lifting of false-formworks are operated by hydraulic double-acting cylinders.

- Advantages
- ▶ CUSTOMIZED TO DIFFERENT DESIGNS
 - ▶ LOW DIMENSIONAL TOLLERANCES
 - ▶ RELIABLE AND DURABLE SYSTEMS THAT ENSURE HIGH PRODUCTION STANDARDS

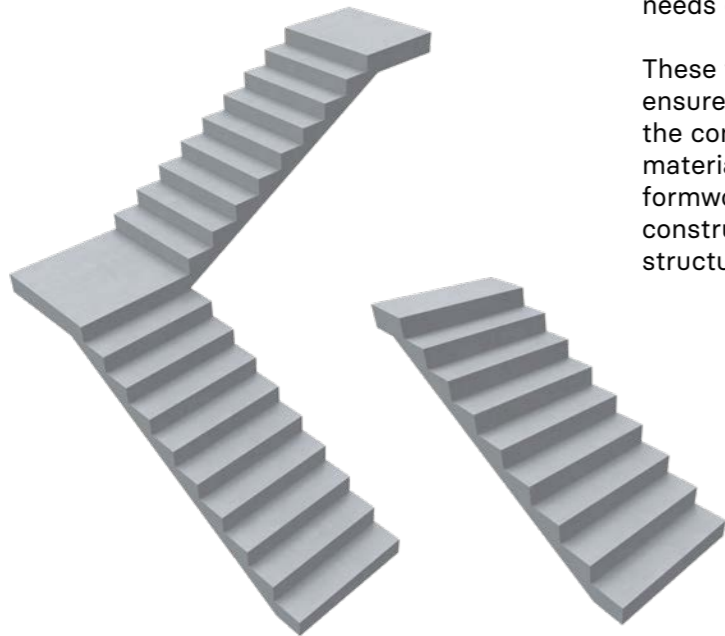
Precast elements



Products range

FORMWORKS FOR STAIRCASES

Precast element



The staircase formworks are designed to meet the needs of modern construction projects.

These formwork systems are engineered to ensure precision, efficiency, and safety during the construction of staircases. Made with durable materials and advanced technology, Olmet Italy's formworks allow for quick assembly, reducing construction time while ensuring excellent finish and structural integrity.

- Advantages
- ▶ DESIGNED TO BE QUICKLY AND EASILY ASSEMBLED/DISASSEMBLED
 - ▶ SMART SYSTEM FOR ADJUSTING ALL THE DIMENSIONS OF THE ELEMENT
 - ▶ HORIZONTAL OR VERTICAL FORMWORKS, ADAPTABLE TO EVERY CUSTOMER REQUIREMENT



Products range

FORMWORKS FOR 3D ELEMENTS



The formworks for 3D elements enable the operator to manufacture a wide range of pre-cast concrete elements as they are manufactured as modules to be differently combined.

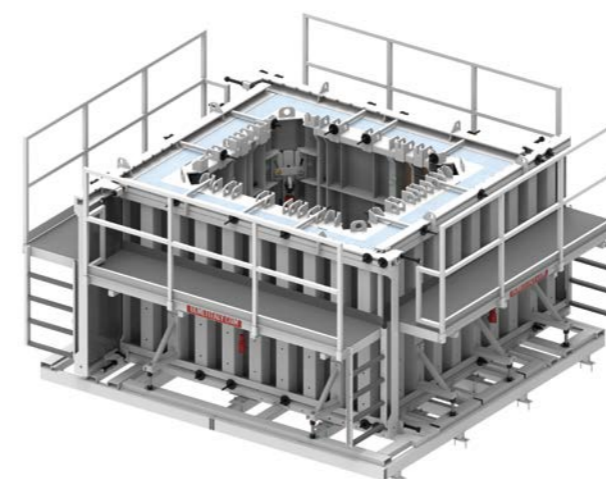
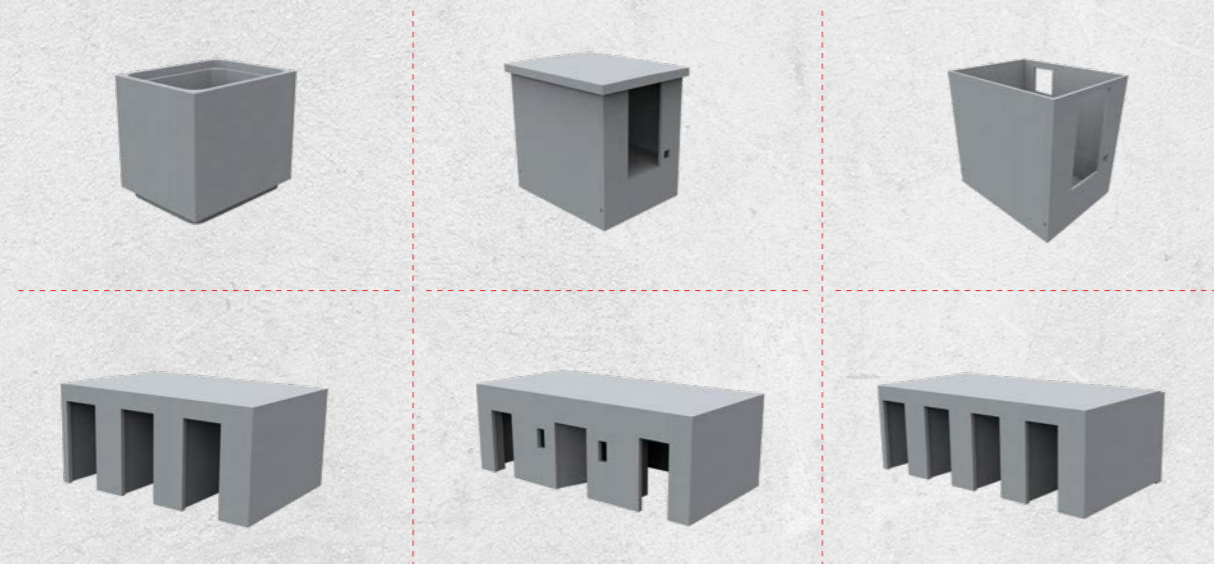
Formworks belonging to this category are for example cabins for power sub-stations, garages, dwelling units, elevator shafts, bath cells (bathrooms and toilets), septic / sewage tanks, water reservoirs and many other concrete elements.

Advantages

- ▶ WIDE RANGE OF CONCRETE ELEMENTS
- ▶ SMOOTH INNER WALLS
- ▶ AUTOMATED KINEMATIC MECHANISMS FOR THE MOVEMENT OF ALL FORMWORK PARTS
- ▶ 0°/180° ELEMENT TITLING SYSTEMS
- ▶ MODULAR MULTI-SECTION FORMWORKS



Precast elements



Products range

OSM - OLMET STANDARD MAGNETIC BOX

The OSM is the basis for all applications in shuttering profiles. The OSM consists of an integrated automatic magnet system with a retaining power of 1000-2100 kg and easy screw connection for adapters.

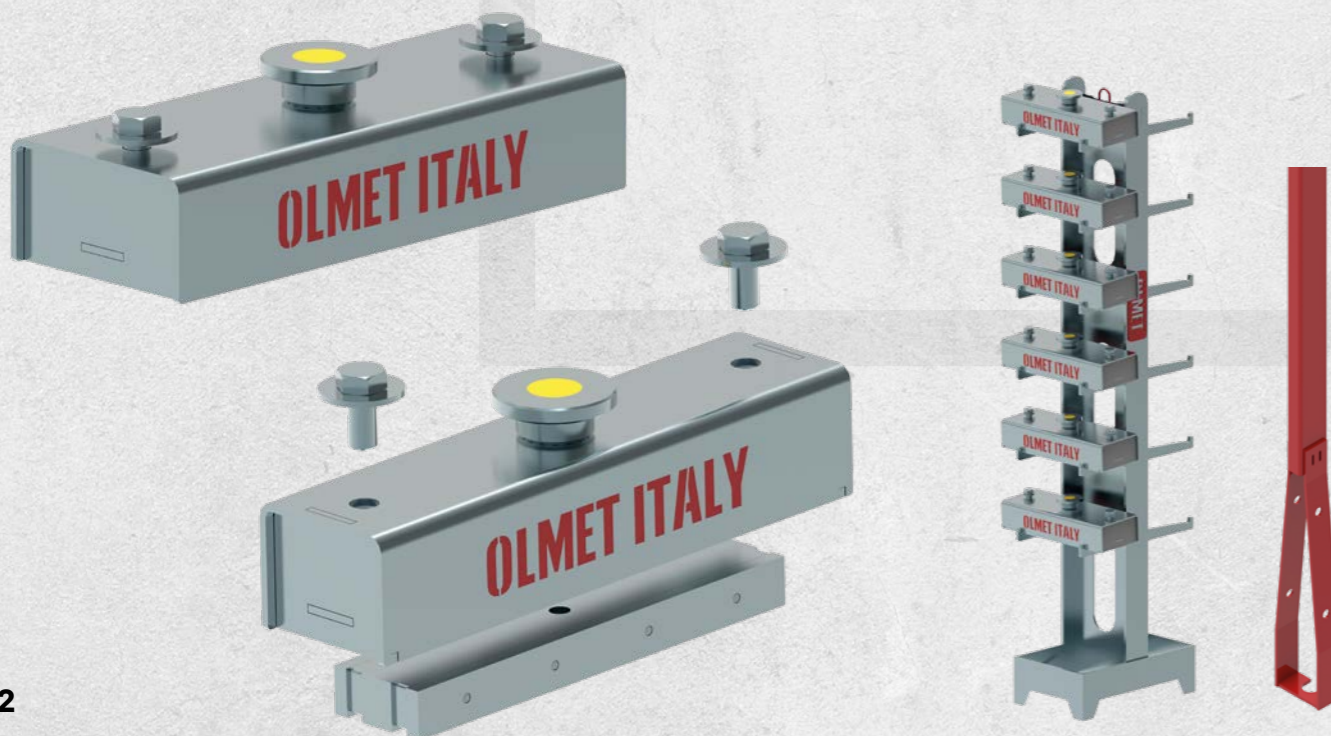
Thanks to the easy screw connection, the magnetic boxes can be coupled with any type of accessories. The highest quality of magnets guarantees extraordinary durability and reliability over time.

The formwork shuttering system plays an essential role in the production of concrete elements. Its adaptability, reliability and longevity are pivotal to an efficient production.

The OSM magnetic system mostly consists of an external steel box, a built-in permanent magnet and an integrated push-button for activation and deactivation, to ensure the best standards of adhesiveness to the casting surface and safety of use.

The OSM system provides the basics for a fast and rational formwork system, to manufacture high-quality precast wall panels and other precast elements while preventing excessive tear and wear of the casting surfaces.

Therefore, the OSM system is the basic device for assembling shutters or casting separators made of steel, wood and aluminium. By using different accessories, it is possible to fix any kind of small, medium or large size insert in an extremely safe way. The OSM system offers many applications: it has been systematically used for years by pre-casting companies with excellent results.



Services

DESIGNING AND MANUFACTURING THE PERFECT SOLUTION TO REACH EXCELLENCE



6

Implementation, revamping, spare parts



5

Assistance



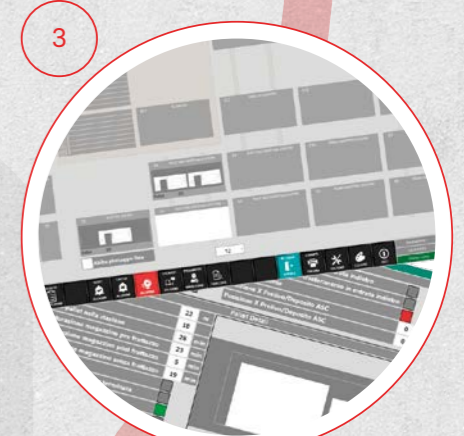
1

Project study



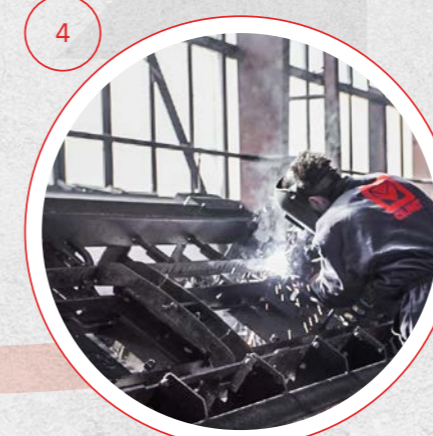
2

3D designing



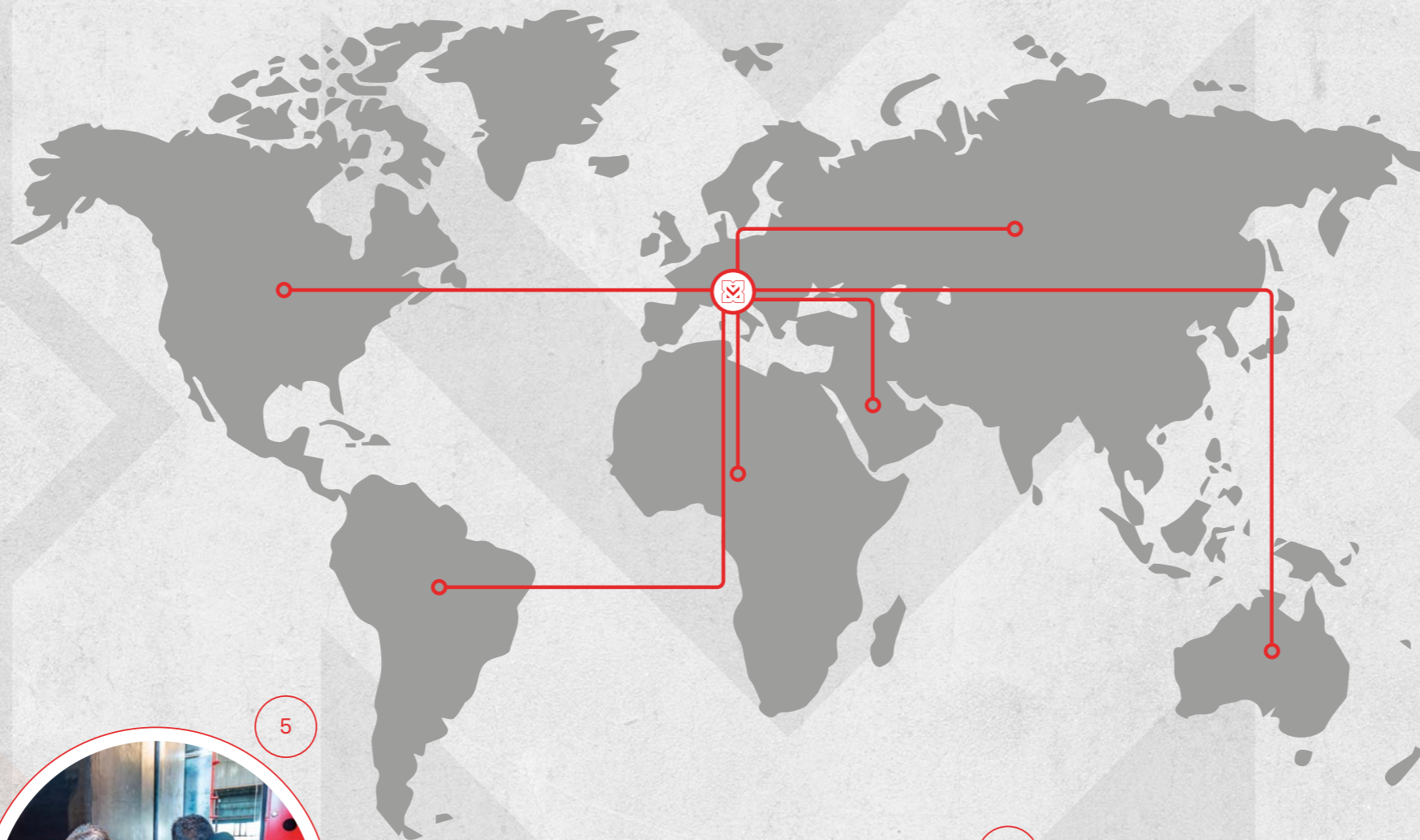
3

Managing software



4

Supply, assembling works, start-up





OLMET ITALY s.r.l.
Vicolo Treviso, 1 - 31040
Signoressa di Trevignano (TV) - ITALY

+39.0423.670225
olmetitaly.com
info@olmetitaly.com

Scan me!

